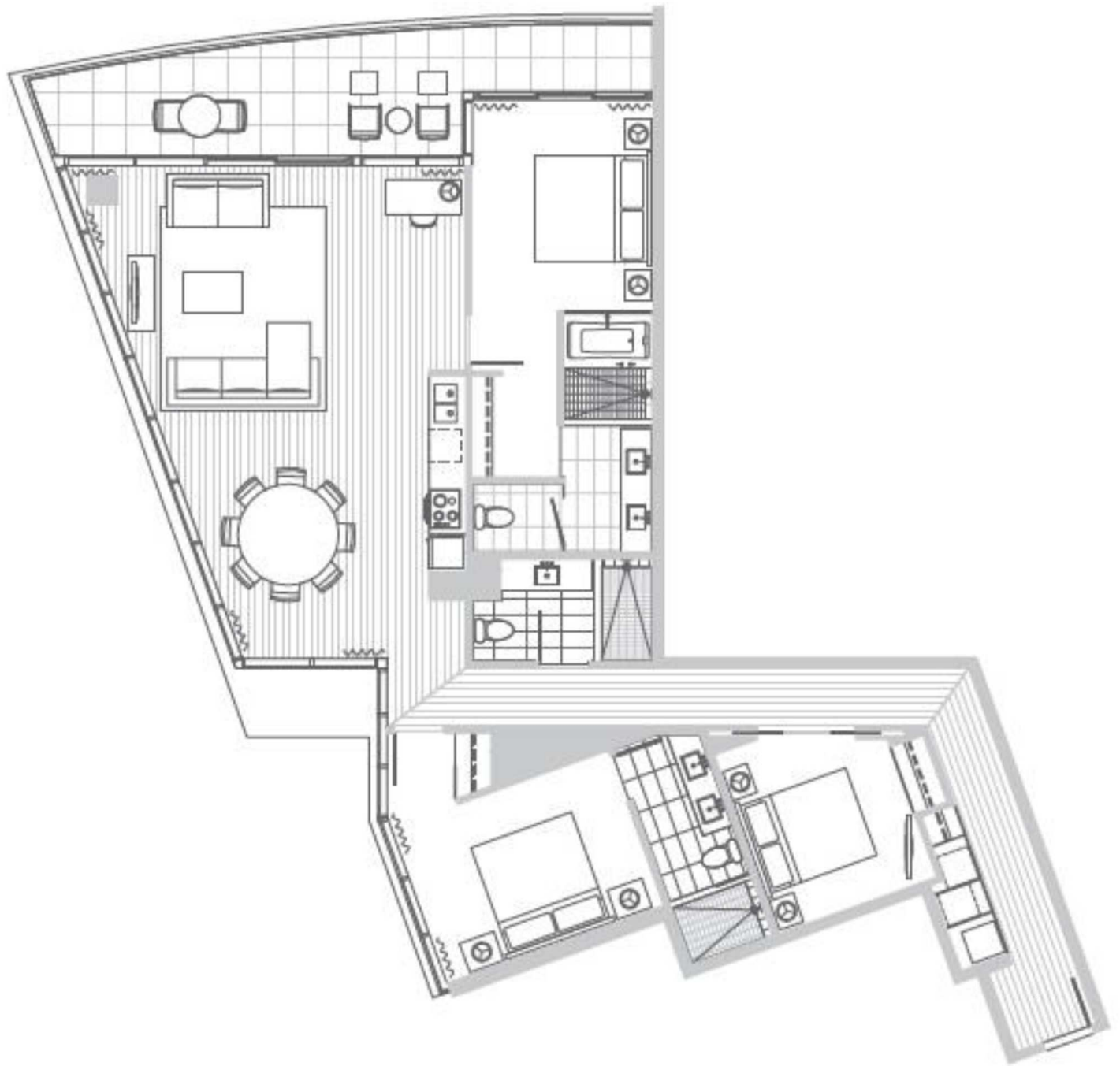


# THREE BEDROOM



GRAND LEVEL

THREE BEDROOM 08 07 06 05 03 02 01

DRAFT PLAN

The Ritz-Carlton Residences, Waikiki Beach are not owned, developed or sold by The Ritz-Carlton Hotel Company, L.L.C. or its affiliates ("Ritz-Carlton"). Ritz-Carlton has granted a license allowing certain use of The Ritz-Carlton marks in connection with the marketing of Tower 1 and Tower 2 units, however Ritz-Carlton has not confirmed the accuracy of any of the statements or representations made herein or in any other materials. Listed by Compass Real Estate International, in an effort to continuously improve the project's features, the developer reserves the right to change or modify plans, materials, and/or specifications without notice. All view lines used in project marketing materials are approximate and may not represent the actual view. Views are unobstructed and subject to change as a result of future development.